

90730

Art.	LxH/mm	Targa/mm
-1	215 x 190	150 x 100
-2	255 x 210	180 x 130
-3	285 x 245	200 x 150

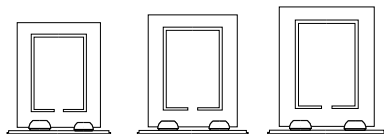
Targa non inclusa



SPESSORE 6 MM



TARGHE in ALLUMINIO
Vedi Pag. 195-199



90731

Art.	LxH/mm	Targa/mm
-1	190 x 215	150 x 100
-2	220 x 255	180 x 130
-3	240 x 285	200 x 150

Targa non inclusa



SPESSORE 6 MM